

# FAIRMONT SCOTTSDALE PRINCESS

## *Cholla Suite (Main Building)*

### **BEDROOM (SEPARATE FROM LIVING ROOM)**

- King size bed with bench
- Double doors that close off from the living room
- Bureau w/drawers and 42" LG flat screen TV
- Cordless phone
- Spacious closet
- Iron and full size ironing board
- iHome clock radio

### **LIVING ROOM:**

- Double size sofa bed
- Armoire w/42" LG flat screen TV
- Separate lounge chair and coffee table
- Wet bar/refreshment center/Nespresso machine
- Wooden table (seats up to four)
- Wireless/high-speed Internet access
- Contemporary Southwestern-style furnishings

### **BATHROOM:**

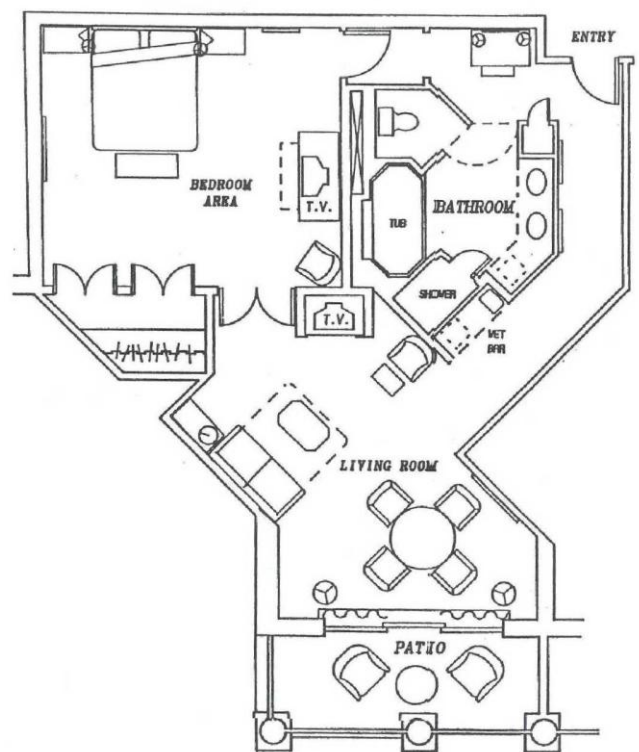
- Spacious bathroom with granite countertops and dual sinks
- Oversize soaker tub
- Separate shower with glass door
- In-room safe
- Two plush bathrobes
- Bathroom scale and hair dryer

### **PATIO:**

Covered patio with table and two chairs

### **OTHER:**

- Approximately 925 square feet
- Views overlooking the South Pool or Princess Plaza
- Located on the 3<sup>rd</sup> and 4<sup>th</sup> floors of the Main Building



*925 square feet*